

pzcounter

From: Dick Fosbury
Sent: Monday, February 8, 2021 7:43 AM
To: pzcounter
Subject: FW: Another email 'how do we replace our aging transmission line'
Attachments: PastedGraphic-1.pdf; Untitled attachment 00025.htm; PastedGraphic-2.pdf; Untitled attachment 00028.htm; PastedGraphic-3.pdf; Untitled attachment 00031.htm; PastedGraphic-4.pdf; Untitled attachment 00034.htm

RECEIVED

FEB - 8 2021

BLAINE COUNTY
LAND USE & BUILDING SERVICES

FYI...

From: Kiki Tidwell <ktinsv@cox.net>
Sent: Monday, February 8, 2021 7:25 AM
To: Dick Fosbury <dfosbury@co.blaine.id.us>; Jacob Greenberg <jgreenberg@co.blaine.id.us>; Angenie McCleary <amccleary@co.blaine.id.us>
Cc: Fritz Haemmerle <fxh@haemlaw.com>
Subject: Another email 'how do we replace our aging transmission line'

Commissioners,

Please see where I have highlighted below where Idaho Power lobbied its citizens advisory committee to change the plan from a temporary line up hwy 75 to a permanent redundant line. They were told for just \$2 million more, the line could be permanent.

This project didn't start out as a redundant line need, it started out as a project to repair the original line. The PUC's own staff testified that a redundant line was not needed and that the cost was not justified for the amount time it may come into use. And please note Rick's language, " how do we replace our one aging transmission line." Idaho Power's goal changed from repairing our original line to replacing it. In fact, repairing the original line is not documented anywhere in any project costs that Idaho Power is prioritizing, certainly not part of this current project proposal.

Kiki
Kiki Tidwell

From: Rick LeFaivre [<mailto:rlefaivre@gmail.com>]
Sent: Tuesday, July 14, 2015 12:31 PM
To: Kiki Tidwell
Cc: Kerrin McCall
Subject: Re: drive down Buttercup



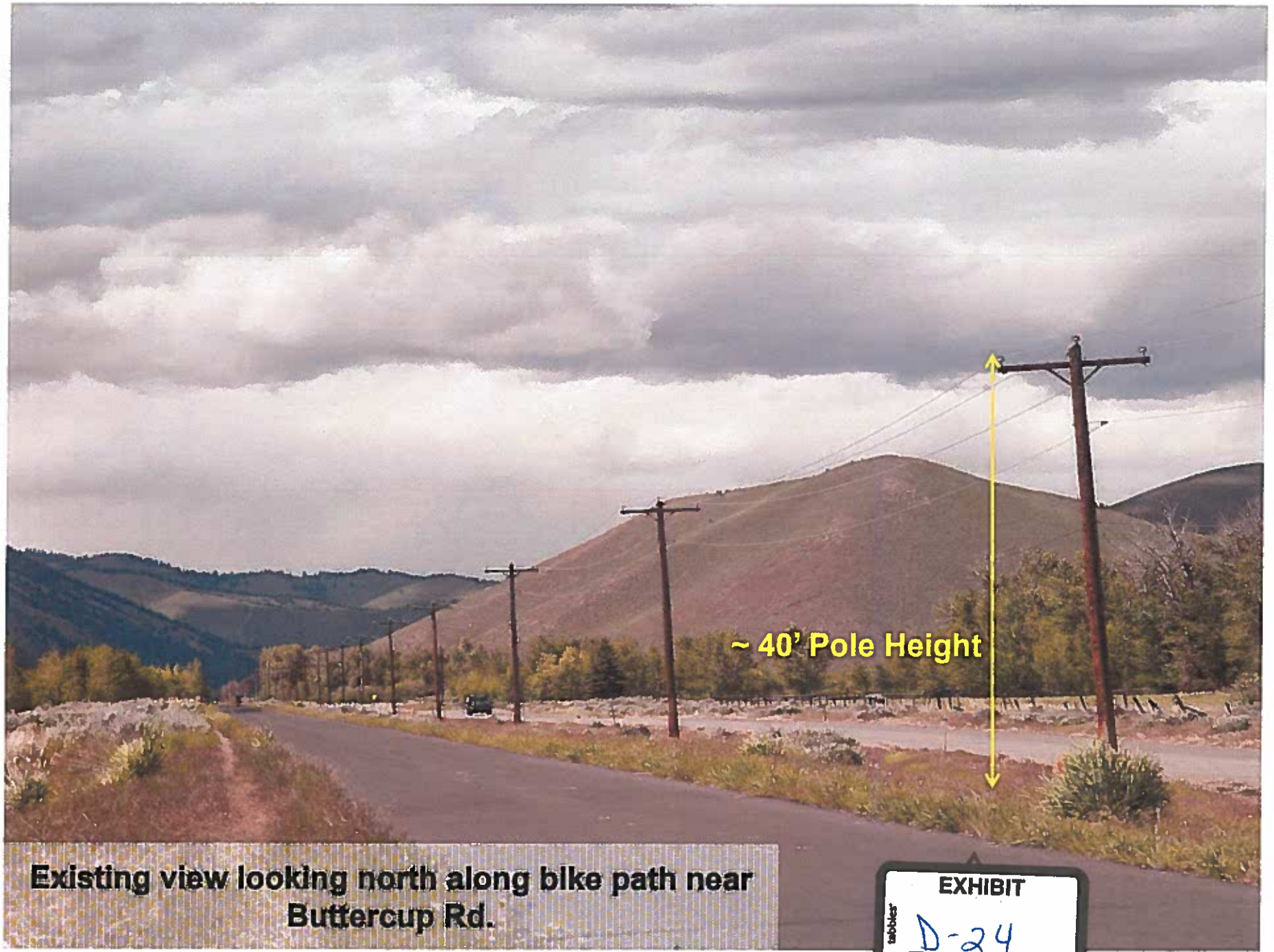
Kiki, the poles are not double in height — according to the IPCO report, they vary from 4 to 8.5 feet higher than the existing distribution poles to accommodate the transmission lines on top. The existing poles along Buttercup are ~40 feet high, and the new poles will be ~47 feet high. Along the highway (the most visible portion, for sure), the existing poles are ~48 feet tall, and the new poles will be ~56 feet high (see additional pictures below). For the section along the highway that is most visible to visitors, the CAC did a study of undergrounding the distribution lines so that poles of the existing height could be used just for the transmission lines, but it added way too much community cost to the project, hence the new dual transmission plus distribution poles.

I have almost two years worth of emails debating every aspect of this project, searching for alternatives. This includes some very in-depth discussions with the Idaho Power transmission people on what is and is not feasible. During that time, evaluating dozens of options, I was unable to find a viable alternative to this plan. What really flipped me over from a skeptic to a believer was the challenges they have replacing the

existing 50-year-old line through the hills before it starts having debilitating outages. In other words, this shifted from “how do we handle the occasional outage” to “how do we replace our one aging transmission line.” They will need somewhere between 40 to 80 days of full outages to replace that line, flying in new poles with helicopters, which is simply unacceptable to the North Valley. With this plan, for a cost of under \$2M to the North Valley communities, we get a redundant line albeit with slightly higher weathered steel poles that frankly look better to me than the aging wooden poles we currently have, but I agree that that is an esthetic judgement that will vary from person to person), along with an upgraded line through the hills also with weathered steel poles, and we will have the same kind of redundant access to the grid that most of the rest of Idaho and the country enjoys (at least two-way redundant access is strongly recommended if not mandated for grid security). I certainly don’t see any viable alternatives.

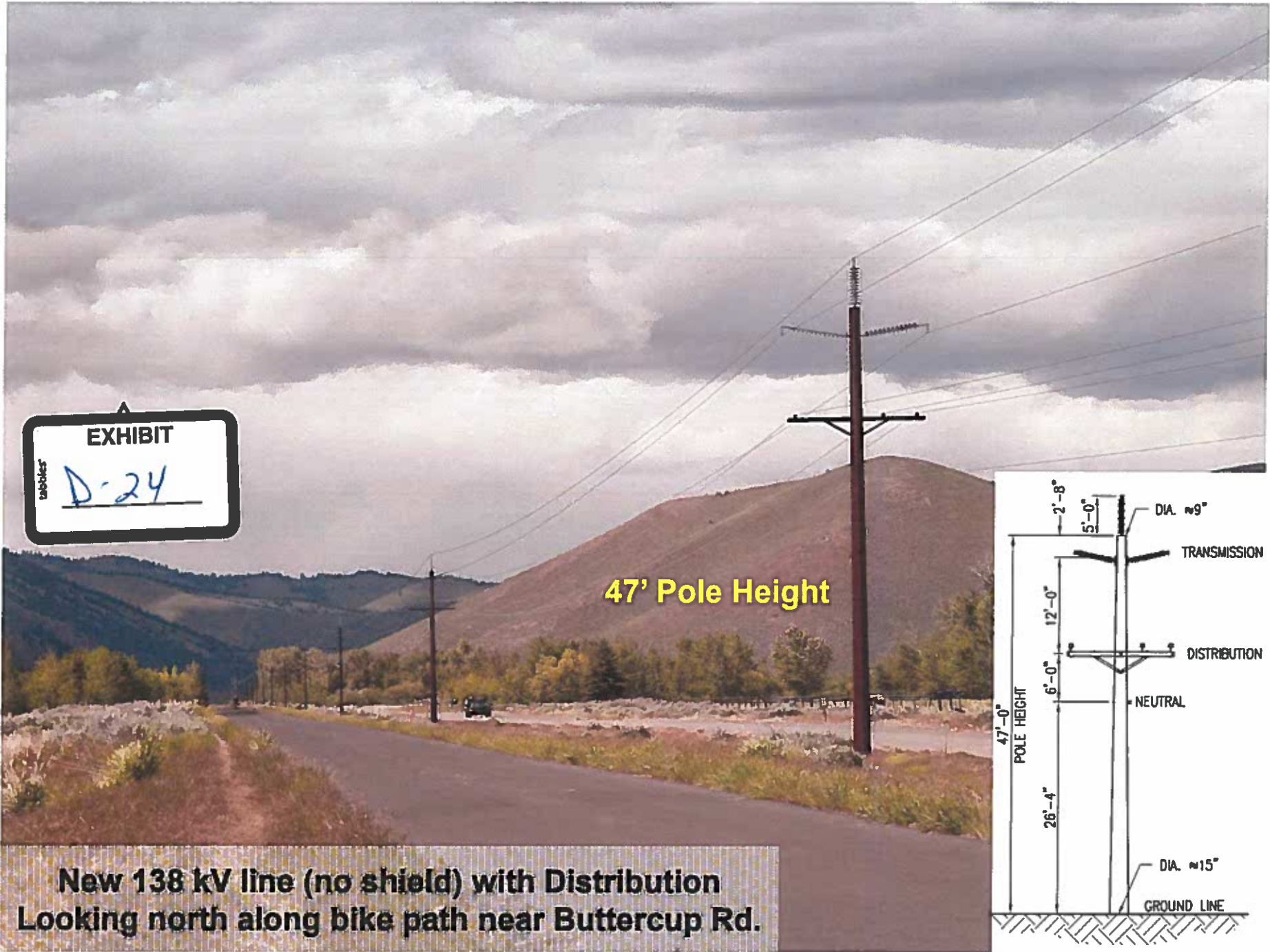
Regards,

Rick



Existing view looking north along bike path near Buttercup Rd.

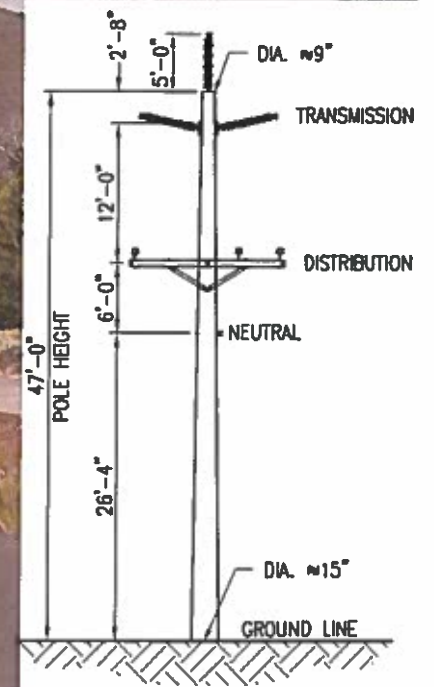
EXHIBIT
D-24

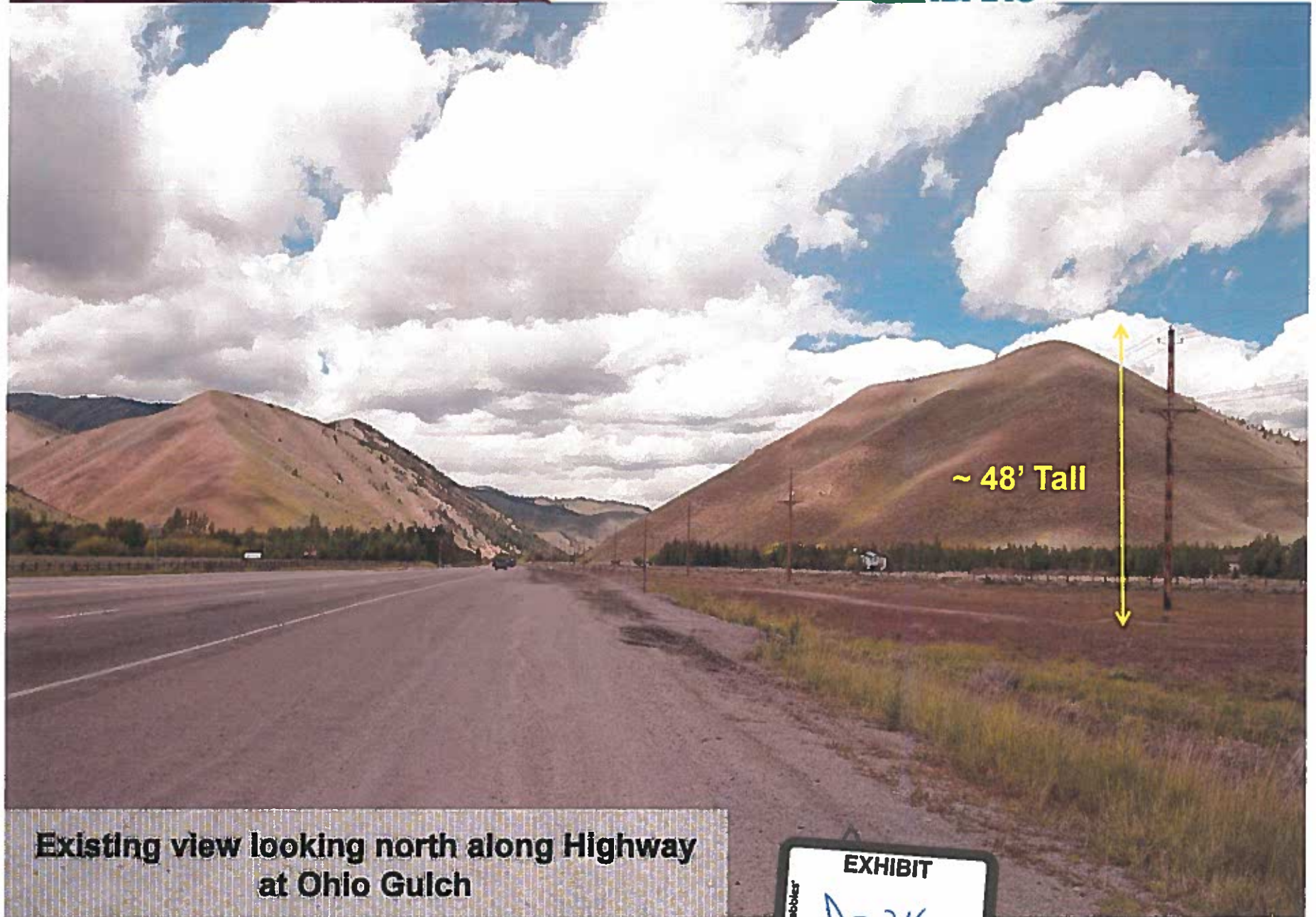


tabbles
EXHIBIT
D-24

47' Pole Height

New 138 kV line (no shield) with Distribution
Looking north along bike path near Buttercup Rd.

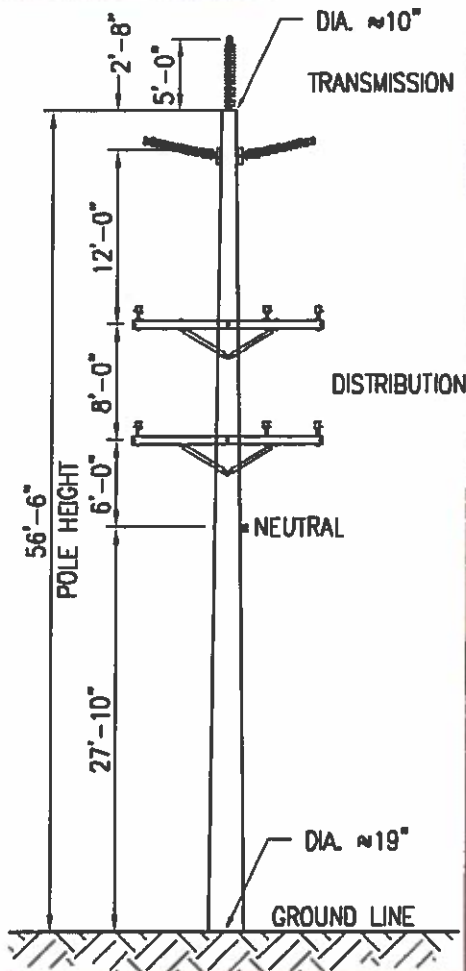




~ 48' Tall

Existing view looking north along Highway
at Ohio Gulch

EXHIBIT
D-24



New 138 kV transmission (no shield)
Double circuit distribution
Looking north along Highway at Ohio Gulch

EXHIBIT
D-24