



Blaine County Land Use & Building Services Memo

Date: March 31, 2021
To: Board of County Commissioners
From: Kathy Grotto
Subject: Comprehensive Plan - correction of factual error

Commissioners,

It has been brought to our attention that there is an error in the Special Areas and Sites chapter of the Comprehensive Plan. In the Hailey & Bellevue Canyons subarea section (enclosed), on page 24 in the upper right column there is a list of "Several archaeological sites/historic sites potentially eligible either for individually and/or part of a historic district." One of the bullet points is "Edres Mine in Lees Gulch."

The Edres Mine is not located in Lees Gulch. It is in the Diebenow Gulch Drainage and cannot be reached by vehicle via Lees Gulch. A resident of the area has requested that this error be corrected.

Tim Graves has stated that there is no need to hold a public hearing to correct this factual error in the Plan, but that it be presented to you for a simple vote to correct it. The bullet point should be corrected to remove "in Lees Gulch" so that it simply reads "Edres Mine." Other mines are listed in the chapter without any locational information.

Thank you.

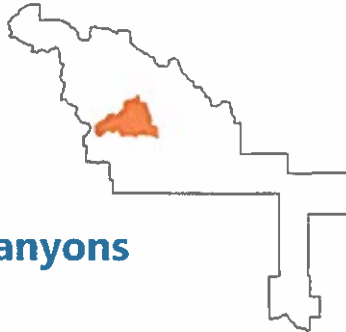
Enclosure: Pages 23 & 24, Special Areas and Sites

Kathy Grotto
Deputy Director
Blaine County Land Use and Building Services
219 1st Ave. South
Hailey, ID 83333

(208) 788-5570
Fax: (208) 788-5576



*Shoshone Train Arriving at the Hailey Station: Photo Credit-
The Community Library Center for Regional History*



Hailey & Bellevue Canyons

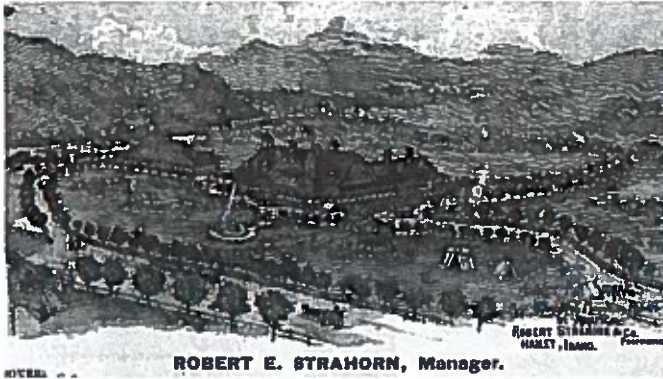
Location and Context

In October, 1879, galena ore (an amalgam of silver, lead and zinc) was discovered in Galena Gulch west of Bellevue. Thus began the silver rush that brought thousands of prospectors into the Wood River Valley. Two of the valley's most productive mines, the Minnie Moore and Queen of the Hills, produced between \$10 and \$15 million in ore. In 1884, English investors bought the Minnie Moore for \$500,000. The miner's strike of 1884-85, took place over attempts of Galena Gulch mine owners to reduce wages from \$3.50 to \$3 a day.

Beginning in 1881, Hailey Hot Springs Resort in Democrat Gulch attracted residents and tourists for medicinal treatment and recreation, and provided hot water for Hailey's Alturas Hotel. Developed into a major destination in the late 1880s, the resort lasted until the hotel burned down in 1899. The majority of historic buildings remaining in Blaine County are found in the platted townsites of Hailey and Bellevue.

Historic Land Uses & Themes

Agriculture; Civilian Conservation Corps projects; commerce; community development; Forest Service administration; infrastructure; mining; outdoor recreation/tourism; resort development; settlement; townsite development; timber; and transportation.



1889 Promotional Drawing of the Hailey Hot Springs Hotel:
Photo Credit-The Community Library Center for Regional History

National Register for Historic Places Properties and Districts

- 6 archaeological sites recommended eligible for listing to the NRHP
- 10 historic sites recommended eligible for listing to the NRHP
- 1 historic district listed to the NRHP; Bellevue Historic District (1982)
- 12+ historic buildings located in the Old Hailey townsite including the *Blaine County Courthouse* currently listed on the NRHP (however most municipalities are not covered in this study or data provided in tables).



Hauling from the Minnie Moore Mine (Bellevue): Photo credit –
The Community Library Center for Regional History

Several archaeological sites/historic sites potentially eligible either individually and/or part of a historic district:

- Ketchum to Stanley Stock Driveway
- Oregon Short Line Railroad (subsidiary of Union Pacific Railroad)
- Sawtooth Park Highway (Hailey to Yankee Fork wagon road)
- Memorial Prospects at Democrat Gulch
- Edres Mine in Lees Gulch
- Liberty Gem Mine
- Hiawatha Canal
- Halfway Ranch AKA Eccles Flying Hat Ranch

Representative Sites

- Old Hailey townsite
- Bellevue Historic District (commercial core)
- Hailey Gold Belt (also known as the Camas District), Mineral Hill District
- Minnie Moore Mine
- Sawtooth Toll Road/Park Highway/Scenic Byway
- Basque encampments



Basque Sheepherder somewhere outside of Hailey: Photo credit –
The Community Library Center for Regional History

Cultural Resources

- 48 archaeological sites recorded on ASI forms; 44 historic, 1 multi-component, and 3 prehistoric
- 45 historic sites recorded on IHSI forms