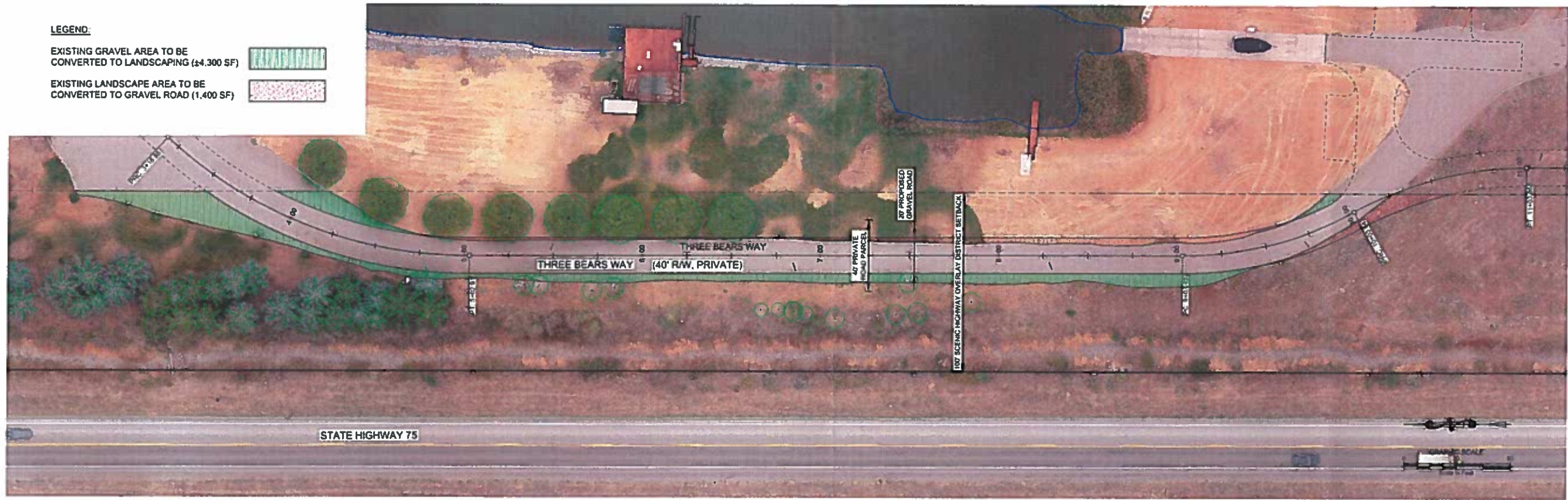


REUSE OF DRAWINGS: These drawings shall not be used on any Project or subproject of this Project without the approval of the original author, Galena Engineering, Inc.



LEGEND:
 EXISTING GRAVEL AREA TO BE CONVERTED TO LANDSCAPING (24,300 SF)
 EXISTING LANDSCAPE AREA TO BE CONVERTED TO GRAVEL ROAD (1,400 SF)

RECEIVED
 FEB 11 2021
 BLAINE COUNTY
 LAND USE & BUILDING SERVICES

A-13
 EXHIBIT

**LATERAL 75 RANCH
 SHO DISTRICT CONFORMITY EXHIBIT**
 LOCATED WITHIN SECTION 13, T. 14 N., R. 18 E., BLAINE COUNTY, IDAHO
 PREPARED FOR FLYING SQUIRREL PRODUCTIONS, LLC

**PRELIMINARY
 NOT FOR
 CONSTRUCTION**

DESIGNED BY
 SKS
 DRAWN BY
 CHECKED BY

**GALENA
 ENGINEERING, INC.**
 Civil Engineers & Land Surveyors
 317 N. River Street
 Hailey, Idaho 83333
 (208) 788-1705
 email: galena@galena-engineering.com

PURPOSE:	NO.	DATE	BY	REVISIONS

EXHIBIT

PROJECT INFORMATION
 P:\Users\skas\OneDrive\Galena\2020\SHO Road Conformity Exhibit.dwg 01/18/21 3:54:18 PM