

Revisions



1

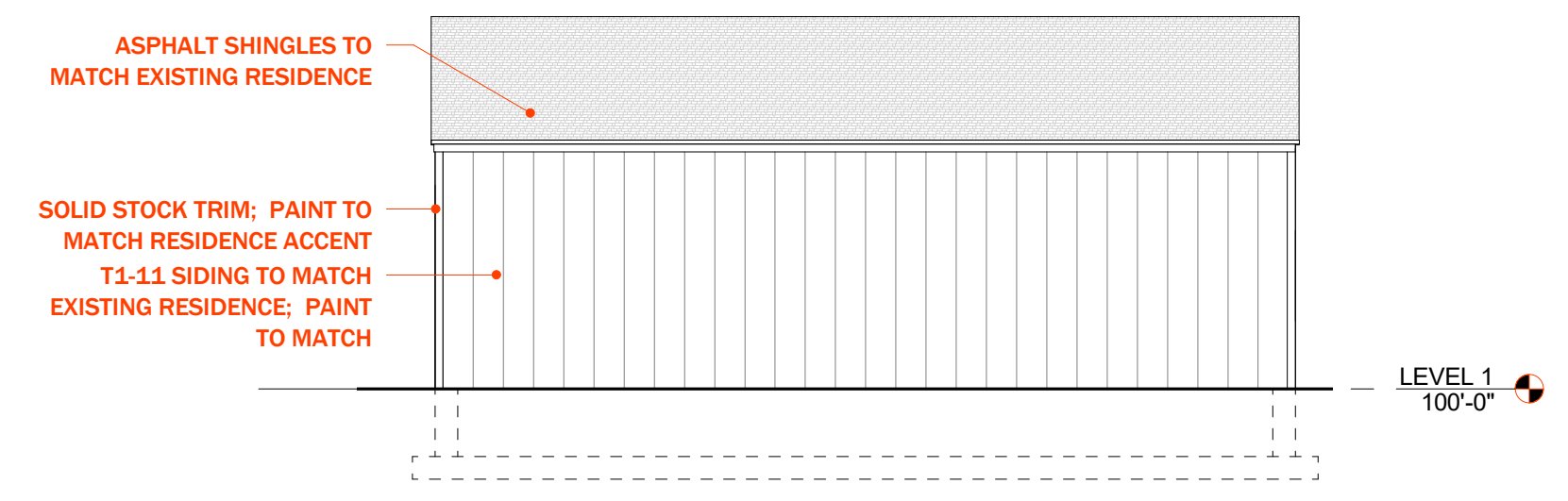
2

3

4

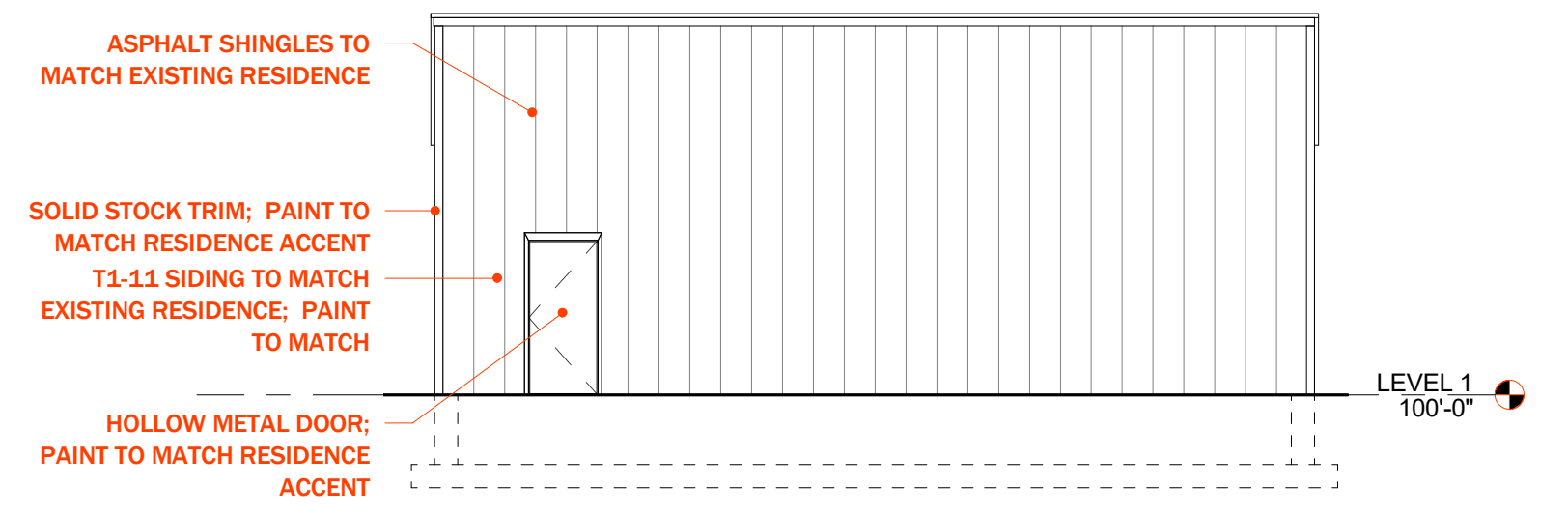
5

D



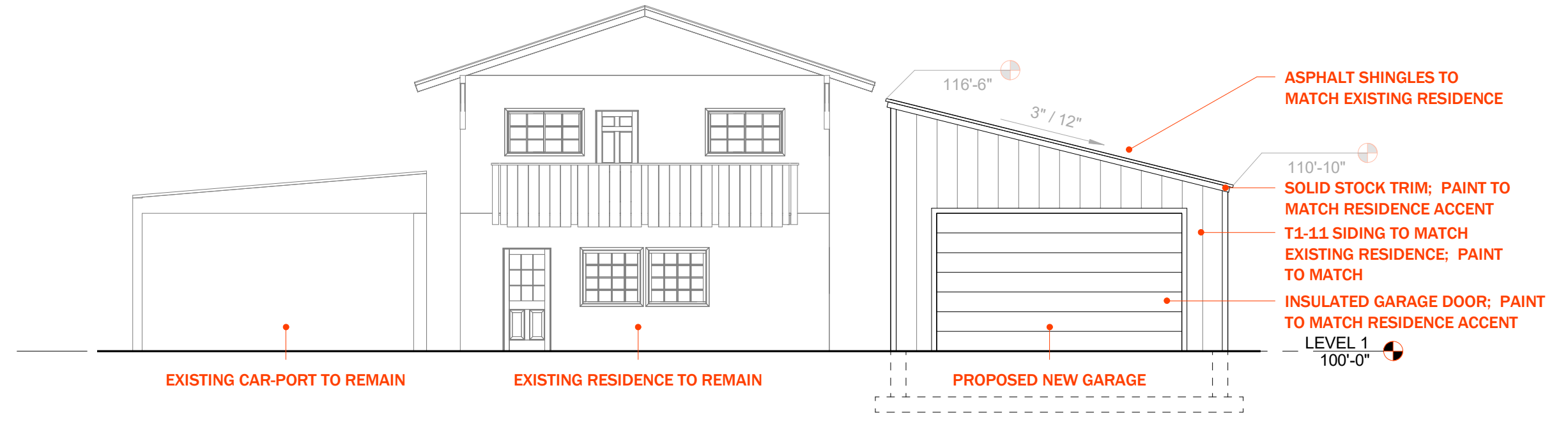
D1 WEST ELEVATION
1/8" = 1'-0"

C



C1 EAST ELEVATION
1/8" = 1'-0"

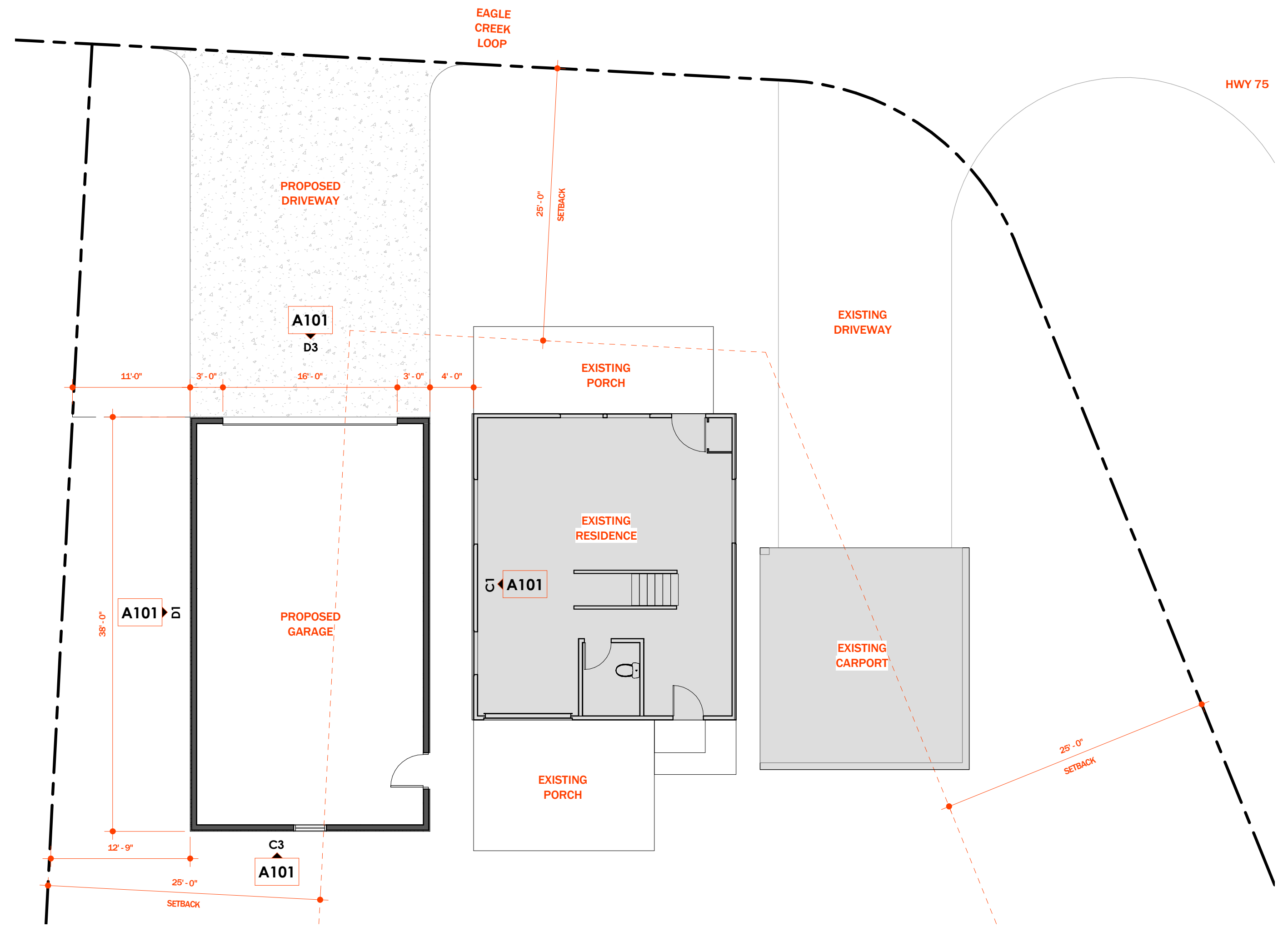
D3 NORTH ELEVATION
1/8" = 1'-0"



C3 SOUTH ELEVATION
1/8" = 1'-0"



B



A2 ANNOTATED PLAN - LEVEL 01
1/8" = 1'-0"

A

1

2

3

4

5

4/17/2021 4:10:31 PM
 ALL RIGHTS RESERVED. ARRANGEMENTS AND PLANS INDICATED OR REPRESENTED BY THIS DRAWING ARE OWNED BY AND THE PROPERTY OF ENTITY ARCHITECTS P.L.L.C. AND WERE CREATED, DEVELOPED, AND DELIVERED OR USE ON AND IN CONNECTION WITH THE SPECIFIED PROJECT. NONE OF THE IDEAS, DESIGNS, ARRANGEMENTS OR PLANS SHALL BE REPRODUCED OR DISCLOSED TO ANY PERSON, FIRM, OR CORPORATION FOR ANY PURPOSE WHATSOEVER WITHOUT WRITTEN CONSENT OF ENTITY ARCHITECTS P.L.L.C. CONTRACTORS SHALL VERIFY AND BE RESPONSIBLE FOR ALL DIMENSIONS AND CONDITIONS ON THE JOB AND THE OFFICE MUST BE NOTIFIED OF ANY VARIATION FROM THE DIMENSIONS AND CONDITIONS SHOWN BY THESE DRAWINGS.