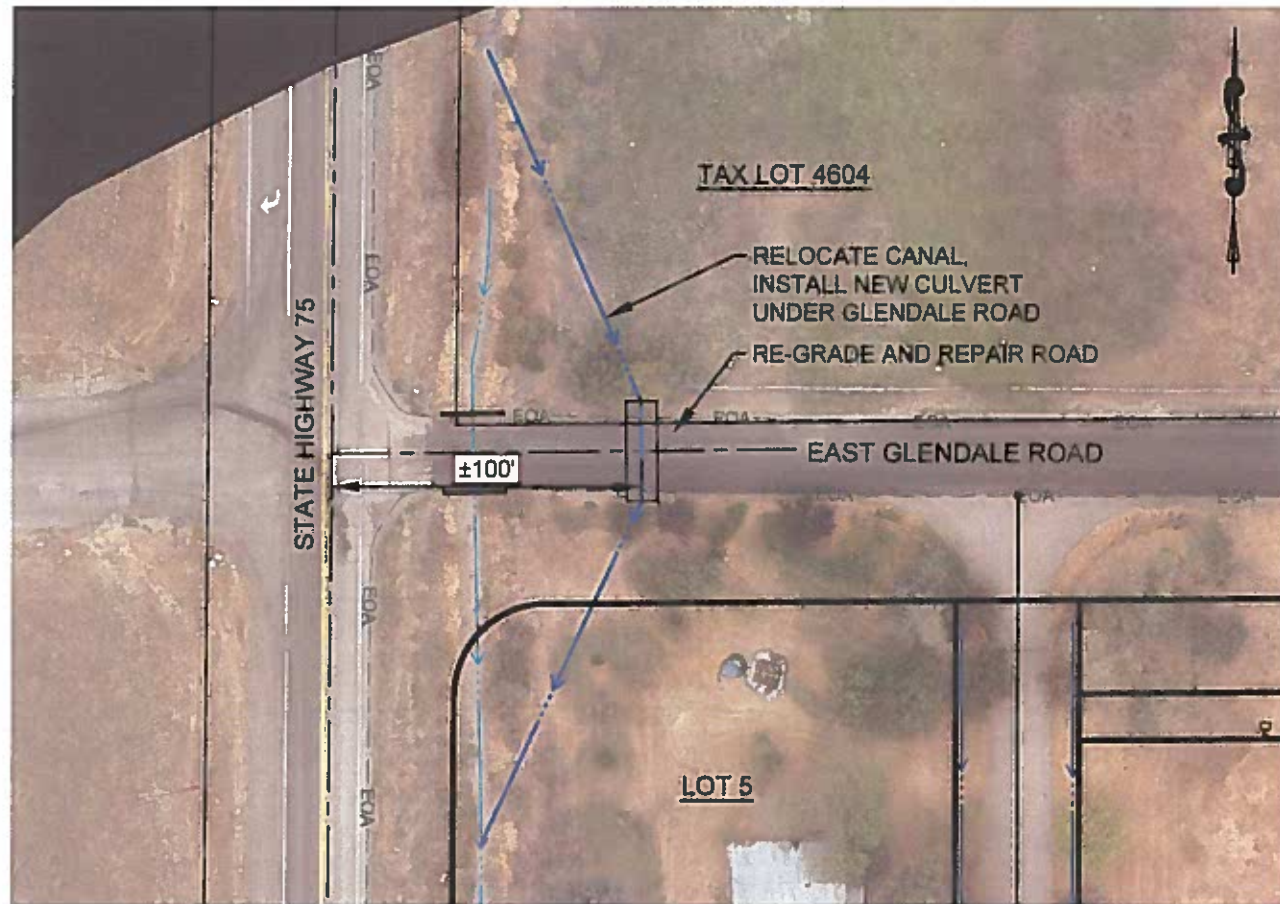


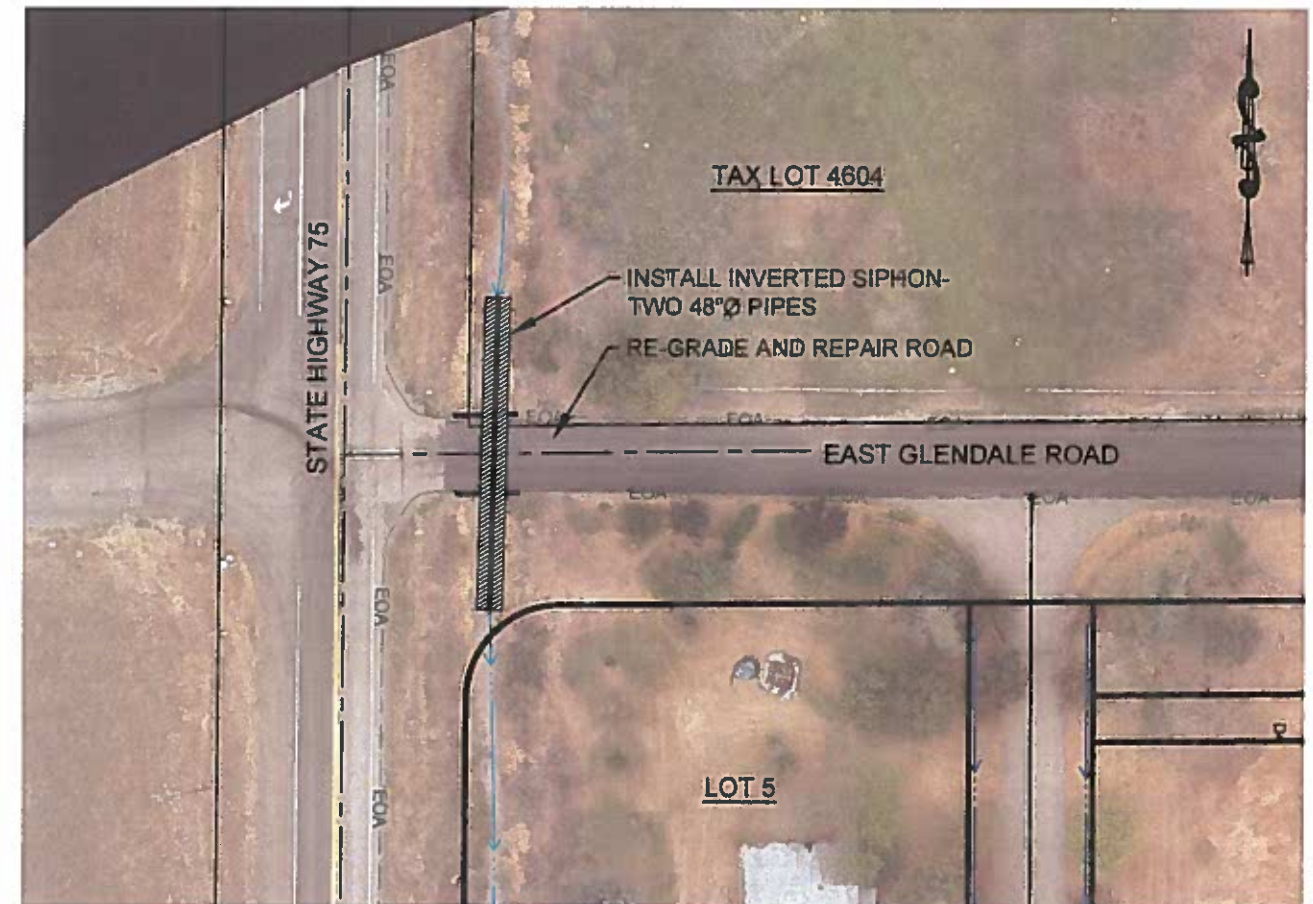
**BLAINE COUNTY  
CANAL RELOCATION IMPROVEMENTS**



**APPROXIMATE COST:** \$250,000 - \$300,000

- EASEMENT ACQUISITION REQUIRED
- CANAL DISTRICT APPROVAL REQUIRED

**BLAINE COUNTY  
INVERTED SIPHON IMPROVEMENTS**



**APPROXIMATE COST:** \$225,000 - \$275,000

- POSSIBLE EASEMENT ACQUISITION REQUIRED
- CANAL DISTRICT APPROVAL REQUIRED
- MAINTENANCE CHALLENGES

**LEGEND**

- Property Boundary
- Adjoining Property Line
- Centerline
- Existing Canal Flow Line
- Proposed Canal Flow Line
- Proposed Pipe
- Proposed Culvert

**NOTES**

1. BOUNDARY INFORMATION SHOWN HEREON IS PER A SURVEY CONDUCTED BY GALENA ENGINEERING DURING A FIELD SURVEY CONDUCTED ON 11/06/2020.
2. AERIAL IMAGERY AND EXISTING CONDITIONS PER AERIAL FLIGHT SURVEY BY N.S. CONSULTING RECEIVED 09/02/2020.

**RECEIVED**  
SEP 08 2021  
BLAINE COUNTY  
LAND USE & BUILDING SERVICES

REVISIONS			
NO.	DATE	BY	DESCRIPTION

**GALENA ENGINEERING, INC.**  
Civil Engineers & Land Surveyors  
317 N. River Street  
Hailey, Idaho 83333  
(208) 788-1705  
email: galena@galena-engineering.com

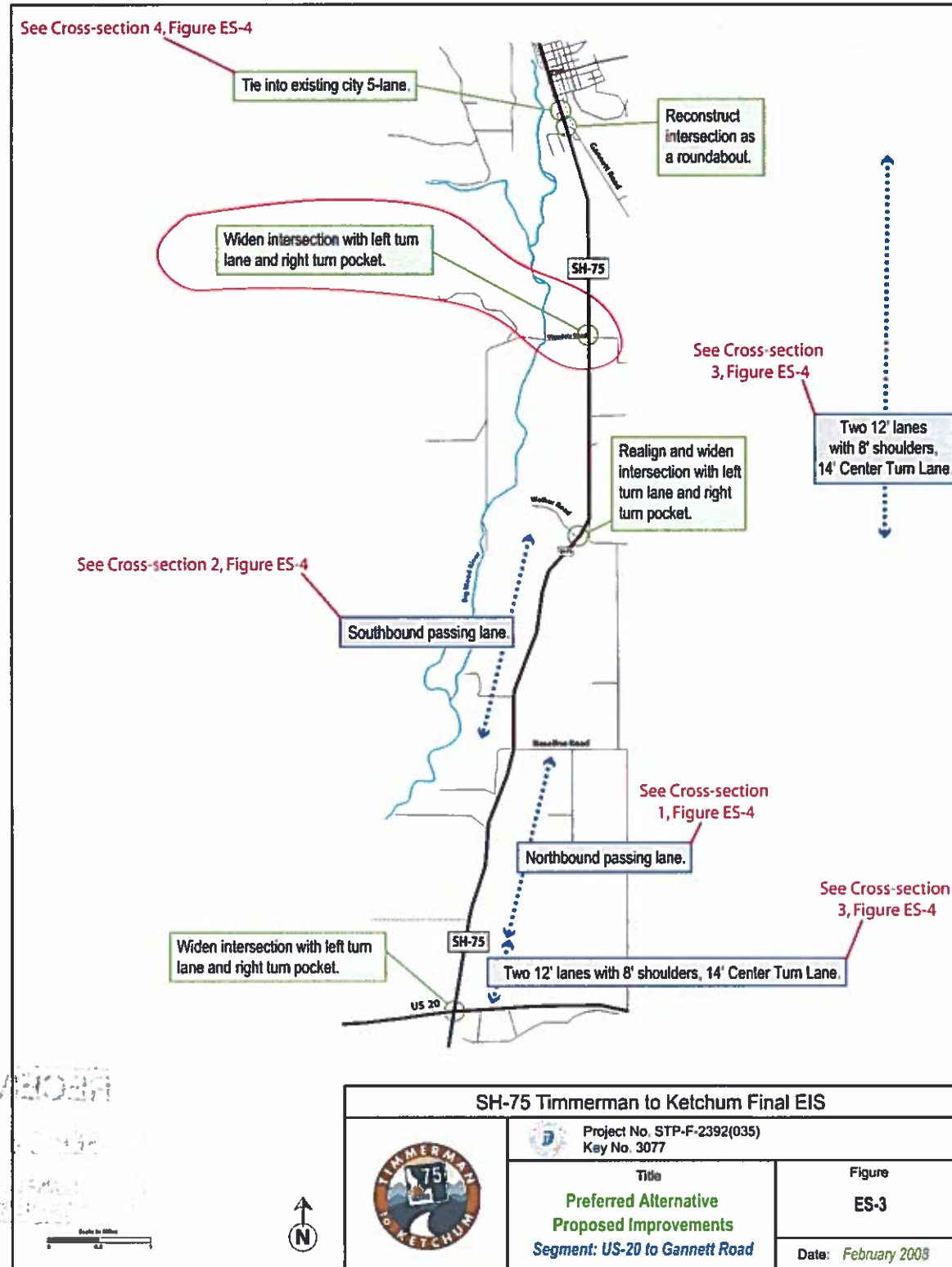
DESIGNED: -  
CHECKED: -  
DETAILED: SKS  
SCALES SHOWN ARE FOR 11" x 17" PRINTS ONLY

**LATERAL 75 RANCH  
HWY 75 / E GLENDALE ROAD INTERSECTION**  
WITHIN SEC 13, T1N, R18E, BLAINE COUNTY, IDAHO  
PREPARED FOR THE FLYING SQUIRREL PRODUCTIONS, LLC

PROJECT INFORMATION  
P:\sdsproj\3458-03\dwg\Exhibits\Glendale Intersection Exhibit.dwg 09/08/21 1:25:13 PM

A-43  
EXHIBIT

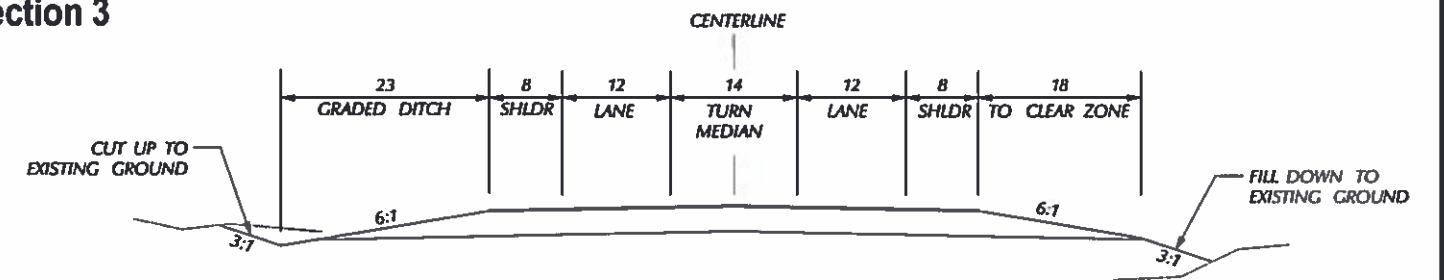
IDAHO TRANSPORTATION DEPARTMENT  
ENVIRONMENTAL IMPACT STUDY IMPROVEMENTS



APPROXIMATE COST: TBD

NOTE: POSSIBLE EXPEDITED TIMELINE (W/ COUNTY SUPPORT)

Cross Section 3



SH-75 Timmerman to Ketchum Final EIS	
	Project No. STP-F-2392(035) Key No. 3077
Title <b>Preferred Alternative                  Proposed Improvements</b> Segment: US-20 to Gannett Road	Figure <b>ES-3</b>
	Date: February 2008

ES-6

REVISIONS			
NO.	DATE	BY	DESCRIPTION

**GALENA ENGINEERING, INC.**  
Civil Engineers & Land Surveyors  
317 N. River Street  
Hailey, Idaho 83333  
(208) 788-1705  
email: galena@galena-engineering.com

DESIGNED :  
CHECKED :  
DETAILED : SKS  
SCALES SHOWN ARE FOR 11" x 17" PRINTS ONLY

**LATERAL 75 RANCH  
HWY 75 / E GLENDALE ROAD INTERSECTION**  
WITHIN SEC 13, TIN. R18E, BLAINE COUNTY, IDAHO  
PREPARED FOR THE FLYING SQUIRREL PRODUCTIONS, LLC

PROJECT INFORMATION  
P:\edskproj\3458-03\dwg\Exhibits\Glendale Intersection Exhibit.dwg 09/08/21 1 25 13 PM