

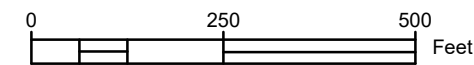
NOTES:

1. PROPOSED PROPERTY BOUNDARIES ARE PER THE PRELIMINARY PLAT BY GALENA ENGINEERING.
2. ADJOINING PROPERTY BOUNDARIES SHOWN HEREON ARE APPROXIMATE PER BLAINE COUNTY GIS.
3. FLOOD BOUNDARIES SHOWN HEREON ARE PER A LETTER OF MAP REVISION, CASE NUMBER 18-10-0371P, EFFECTIVE DATE 1/10/2019.
4. AVALANCHE BOUNDARIES SHOWN HEREON ARE PER AN AVALANCHE STUDY BY ALPINE ENTERPRISES DATED FEBRUARY 18, 2022.
5. NORDIC TRAIL WILL VARY YEAR TO YEAR. TRAIL LENGTH (DOG LOOP) AS REPRESENTED HEREON IS APPROXIMATELY 5 KM.
6. 15% AND 25% SLOPE BOUNDARIES SHOWN HEREON ARE BASED UPON 2015 BLAINE COUNTY LIDAR DATA.

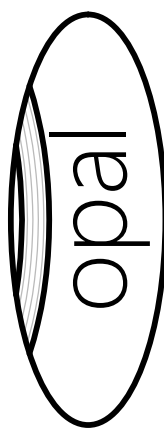
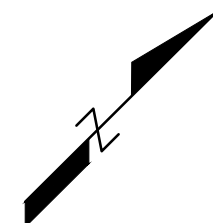
LEGEND:

- PROPOSED PROPERTY BOUNDARY
- APPROXIMATE ADJACENT PROPERTY BOUNDARY
- APPROXIMATE LIMITS OF DRAINFIELD AREA
- 100' WELL SETBACK
- RED AVALANCHE BOUNDARY
- BLUE AVALANCHE BOUNDARY
- 25% SLOPE LINE
- 15% SLOPE LINE
- MOUNTAIN OVERLAY DISTRICT (MOD) BOUNDARY
- MOUNTAIN OVERLAY DISTRICT (MOD) BUFFER
- PROPOSED MOUNTAIN OVERLAY DISTRICT (MOD) BUFFER
- PROPOSED MOUNTAIN OVERLAY DISTRICT (MOD) BUFFER

- PROPOSED ASPHALT
- PROPOSED GRAVEL
- FLOODPLAIN
- FLOODWAY
- EXISTING TRAIL
- POTENTIAL NORDIC TRAIL
- ANTICIPATED WILDLIFE PATH



PRELIMINARY ONLY



OPAL ENGINEERING, PLLC
PO BOX 2530; HAILEY, ID 83333
WWW.OPAL-ENGINEERING.COM

SITE CONSTRAINT MAP

QUIGLEY RANCH SUBDIVISION
PREPARED FOR TVIV QUIGLEY, LLC

22012
PROJECT NUMBER

EX