

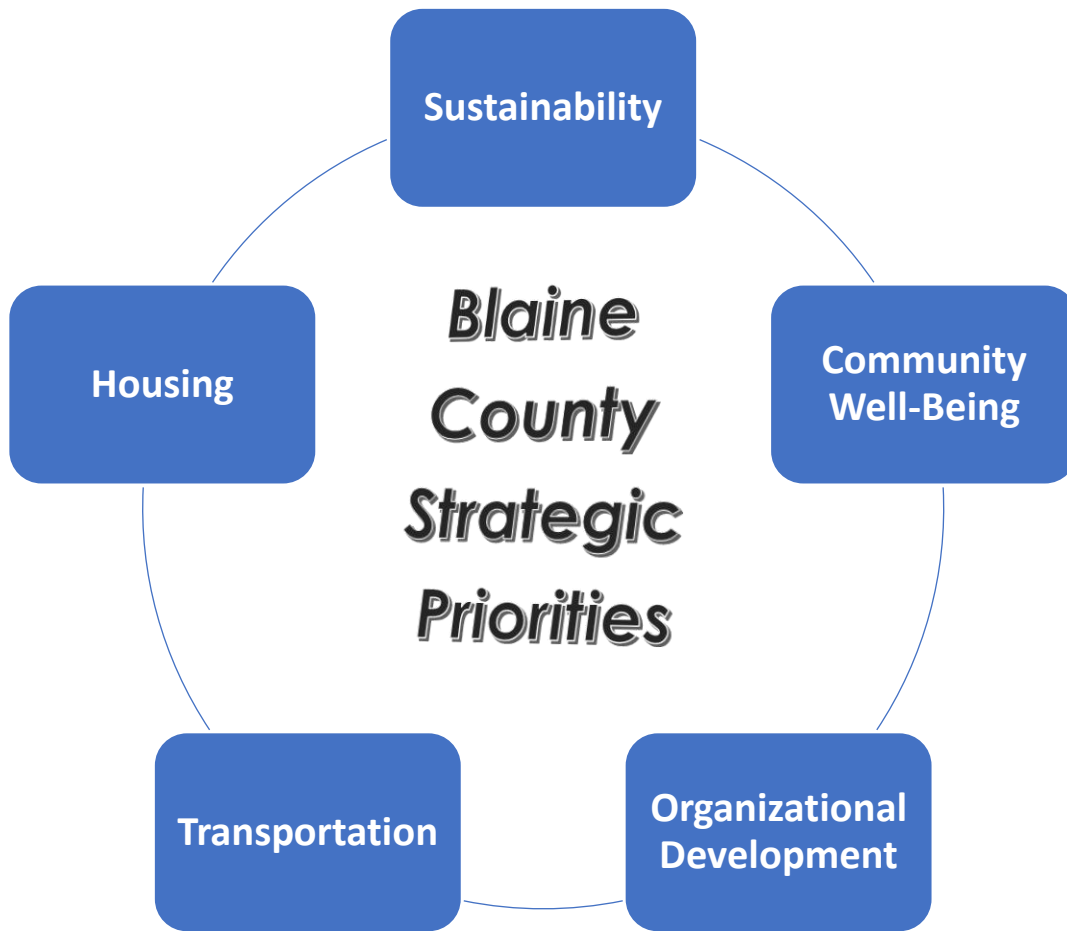


Blaine County
Fiscal Year 2024
External Organizations Budget Request

Prepared by:
Blaine County Administrator's Office
May 1, 2023

FY24 Strategic Priorities

Each budget request for FY24 should directly correlate to at least one of the FY24 Strategic Priorities. All funding requests and approvals will be weighed against how they align with the Strategic Priorities.



General Information

Organization: Blaine County Senior Council, Inc dba Senior Connection

Budget Contact Person:

Jovita Piña
Executive Director
jovita@seniorconnectionidaho.org

Organization Profile

Organization Mission

Connecting seniors with essential services, meaningful programming, their peers and the local community to foster purposeful and passion filled lives.

Operational Description

Description of the organization operations and service(s) provided to Blaine County.

The Senior Connection is the only senior specific organization in Blaine County. We provide programs and services that are unique to supporting independence, promoting health, and encouraging engagement for older adults in our community. Through nine core program and service divisions, the Senior Connection offers critical support to 100% of seniors who walk through our doors. These services and programs include:

- **Nutrition:** Congregate, home delivered meals (Meals on Wheels) and emergency food box distribution
- **Caregiving:** In-home care, homemaker, respite services, and companion care
- **Health & Wellness:** Fit and Fall Proof Classes, circuit training, ageless motion, Senior Connection Vision & Hearing Center, referral and/or financial assistance to a geriatric psychologist
- **Transportation:** Available, accessible, and affordable through-the-door transportation, including paratransit service and regional transport to medical appointments
- **Home & Safety:** Spring and fall yard cleanups, small home repairs, and designated Red Cross disaster relief shelter
- **Senior Volunteerism:** Senior leadership through volunteer opportunities
- **Leisure & Education:** Activities and excursions to enable seniors to be socially connected and engaged in the community, fueling the local economy

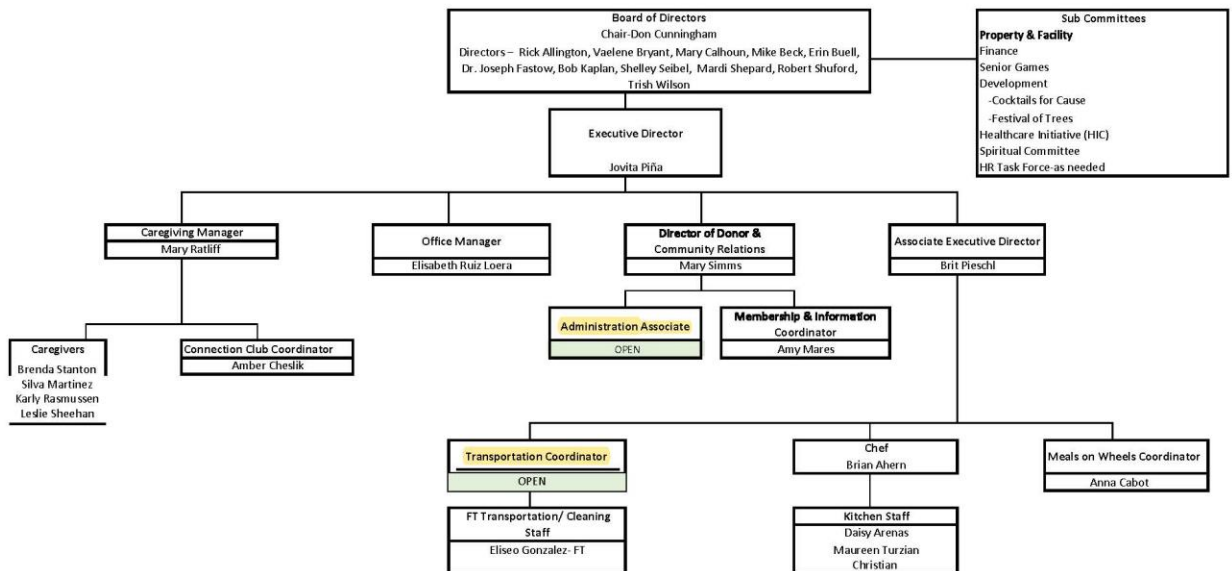
- **Intergenerational Division:** School collaborations with special projects and activities to improve the relationships between generations
- **Information & Resource Division:** Library of resources for older adults to navigate longevity and aging, resources and referrals, annual Navigating Longevity speaker series, and educational presentations

Organizational Structure

Include a current organizational chart that highlights any new FTEs that were added the last FY and highlights in a different color any new FTEs being requested in the upcoming FY.

**Organizational chart attached here and at the end of the Budget Request for ease of viewing*

The Senior Connection Organizational Chart



FY23 Fiscal Year Review

FY23 Performance Metrics

(Provide a bulleted list of at least 3 performance metrics - Note – going forward these should be reported on year-over-year as well as a history of this data)

- Metric 1
- Metric 2
- Metric 3

FY23 Fiscal Year Highlights

(Provide a bulleted list of three to five highlights from FY23 – should tie directly to budget requests and approvals from current FY and how the budget approvals help(ed) your organization achieve your metrics)

- Highlight 1: **Nutrition**

Thanks to the incredible generosity of Blaine County, between the months of July 2022 and April 2023, we served 21,131 meals – **a 53% increase compared to July 2021 – April 2022**. As Blaine County’s senior population continues to grow*, we expect the number of meals served to increase in FY 2024.

** Woods & Poole Economics, Inc. (Blaine Co.) and U.S. Census Bureau, Population Division and CDC Wonder (Idaho and U.S).

- Highlight 2: **Home Care & Memory Care Services**

Physical decline, financial hardships, and isolation are issues that many of our aging neighbors experience and the pandemic has only compounded these problems. Your investment in the Senior Connection’s Home Care & Memory Care Services provided 104 days of our memory care program Connection Club, and over 5,500 hours of in-home care (caregiving). These programs and services are critical in helping older adults in Blaine County go about their daily activities such as using the bathroom, showering, cooking, grocery shopping, and more. Thank you for helping our senior community age with place and with dignity.

- Highlight 3: **Health & Wellness**

Continuing physical activity as we age significantly improves our ability to remain mobile, healthy, independent, and strong. Your support helped us to continue offering our daily fitness classes Monday – Friday including:

- **Fit & Fall Proof:** Helps our seniors stay fit, prevent falls, and form lasting friendships. It helps improve functional mobility for activities of daily living.
- **Casey’s Circuit:** A cycle of 5-7 exercise stations that alternate different muscle groups and body parts used. Each exercise last 30-60 seconds and the cycle is repeated for 30 minutes. This class improves strength, endurance, and heart health.
- **Ageless Motion:** A class that cultivates body-mind health through awareness, mindfulness, slow movements, breathing exercises, meditation, body-mind rejuvenation, and happiness skills.

These classes improve mobility, balance, coordination, strength, and mindfulness for our seniors helping them remain independent for as long as possible.

Additionally, we opened the doors of the Senior Connection Vision & Hearing Center in summer of 2022, and thanks to your support, have provided over 200 vision and hearing screenings. These health services are critical in maintaining vision and hearing, ultimately keeping our seniors connected and engaged with their loved ones.

- Highlight 4: **Transportation**

We provide through-the-door transportation to our center for our congregate meal service and recreational activities to medical transports, both in the local community and beyond. Our transportation service keeps drivers whose abilities may be waning off the road, and prevents others from being homebound and unable to participate in our community. Your investment provided 2,066 rides for seniors in our community. This service is crucial for many of our members who would otherwise be isolated from their peers, nutritious meals, and our community.

FY23 Other Highlights

(Provide any other highlights and updates from FY23)

- Highlight 1

Change in Leadership: In July of 2022, we were thrilled to welcome Jovita Piña into her role as Executive Director of the Senior Connection. Our former Executive Director retired in June of 2022 and Jovita stepped into her role on July 1, 2022. We are honored to have a mission driven leader with over 15 years of nonprofit experience. She has a strong track record for significant operational and strategic improvement. Her financial expertise and budgeting skills have

contributed to the sustainability of the Senior Connection. Jovita is a respected and engaged community member who builds strong relationships. She also brings diversity as a Latina woman and works hard every day to meet community needs.

- Highlight 2

Transportation: Thanks to the incredible generosity of the Idaho Department of Transportation and the Wood River Women’s Foundation, the Senior Connection procured an all new, 2022 StarCraft Allstar bus. This new bus hit the road in September of 2022, providing safe and reliable transportation for our seniors.

- Highlight 3

Nutrition: After the first cases of COVID came to town, our Meals on Wheels program grew by 437% and we had to shift our operations overnight. With the unprecedented increase in demand we experienced through our Meals on Wheels program, as well as our added Curbside Meals, we need more space to improve the efficiency and effectiveness of our kitchen. Through our Capital Campaign in 2021, we raised funds to prepare us for the inevitable growth of the senior population in Blaine County and allotted funding for our kitchen expansion and remodel. Our remodel was completed in March of 2023.

FY24 Fiscal Year Budget Request Highlights

Requested Resources and Associated Costs

(Identify any significant budget requests and applicable information to support the requests. Explain how the requests will support increased performance of the above identified performance metrics.)

- People; Facilities; Equipment; Programming Costs; Other Requested Resources
 - Identify request
 - Identify associated cost of request
 - Identify which **Strategic Priority** this request will help support

- Nutrition - \$40,000
 - **Strategic Priority: Community Wellbeing**

The availability and accessibility of quality nutrition for seniors benefits the overall community by reducing the burden on the healthcare community. The Senior Connection can feed a senior

for an entire year for about the same cost as just 1 day in a hospital or 10 days in a nursing home. The most recent Consumer Price Index for cost of food tells us that prices have increased 8.5% since March 2022.* With no sign of prices stabilizing into FY24, it is critical that we raise the funds necessary to continue providing the quality nutrition that so many of our seniors rely on. If funded, your generosity will help provide over 20,000 meals this year to seniors in our community.

** Source: U.S. Bureau of Labor Statistics Consumer Price Indexes (not seasonally adjusted) and forecasts by USDA, Economic Research Service.*

- Caregiving - \$22,000
 - **Strategic Priority: Community Wellbeing, Transportation**

Like nutrition, providing Caregiving through the Senior Connection helps keep our seniors safe and healthy, reducing the likelihood that they have an accident that results in a hospital stay. The average life expectancy is at a record high of 79 years, and our nation’s senior population is growing exponentially* meaning, people in Blaine County will continue to age and require the essential services and programs the Senior Connection provides. * Additionally, our Caregiving program helps our seniors age in place, in their homes, for as long as possible, reducing the burden on assisted living facilities in our community locally and regionally.

***The Issue | Meals on Wheels America. “ 2021, <https://www.mealsonwheelsamerica.org/learn-more/the-issue>*

- Transportation - \$10,000
 - **Strategic Priority: Transportation**

We are the only senior specific organization in Blaine County, and without our transportation services, many seniors would go hungry, miss crucial medical appointments, or be unable to leave the house at all, leaving them alone for days at a time. We provide over 2,000 rides a year. Many of our riders are on the threshold between being able to access current curb-to-curb offerings from public transportation and requiring more escorted trips. There is no other service in our area that will provide for this need. With your support, we will be able to provide the transportation resources that reduce road congestion by taking vehicles off the road, as well as keeping our seniors engaged with their friends and community.

FY24 Fiscal Year Anticipated Highlights

FY24 Anticipated Projects, Performance and Highlights

(Provide a bulleted list of at least 3 anticipated highlights based upon budget requests or anticipated projects.)

- Anticipated Highlight 1

- **Nutrition:** Manage the growing demand for our nutrition programs: Meals on Wheels, Congregate Meals, Curbside Meals with our new efficient kitchen. Additionally, develop and implement Emergency Food Box program for food insecure older adults in our community. Serve over 20,000 meals.
- Anticipated Highlight 2
 - **Caregiving:** Adequately staff Caregiving Division including additional leadership support for the Caregiving Manager.
- Anticipated Highlight 3
 - **Transportation:** Continue with additional, and covered, parking plan for the west/alley side of the building and cover the frontside parking pad and possibly add more to the pad if the garbage receptacle can be moved to the south side. Deliver over 2,000 transports.

The Senior Connection Organizational Chart

